



Nantlle Vale Dog Training Club Newsletter – July 2016

Important Dates for your diary (members only)

Coffee at Fron Goch, 2nd Monday of the month at 11:00:

11th July
8th August
12th September
10th October
14th November
12th December
9th January

14th September Good Citizen Dog Scheme, Gold Award tests (provisional date)

11th October Fun Assessments

13th October Fun Assessments

20th October Ringcraft Competition. 7pm start at Penygroes Memorial Hall

11th December Club Christmas meal

13th December Dog's Christmas Party. 7pm start at Penygroes Memorial Hall

For more information contact Gail Jones 01286 831092

Our 30th Anniversary Celebration Fun Day

As part of our 30th Anniversary celebrations, on Sunday 19th June we held a Fun Day at the indoor arena at Glynllifon. Despite the horrendous weather it was well supported, with over 140 people attending, and 68 entries in our dog show.

The 'Have a go' sessions at Agility, Obedience Handling, Rally O and Scurry were well used, with Agility having queues of dogs and handlers for most of the afternoon. (Photos courtesy of Sandra Whiting)



Have-a-go Agility



Have-a-go Scurry



Have-a-go Rally O



All activities stopped midway through the show for a demonstration of Heel Work to Music by Margaret Booth's Team.

Results of the Have-a-go Obedience Handling:

Know Nothings:

1. Allan with Ollie
2. June with Millie
3. Lisa with Cadi
4. Laura with Sienna
5. Laura with Phoenix
6. Caryl with Ozzie

Know Somethings:

1. Laura with Ozzie
2. Allan with Ollie
3. Shauna with Merlin
4. Caryl with Phoenix
5. Helen with Jess

Children's Class

1. Tasmyn with Jepster
2. Harry with Wesley
3. Lisa with Cadi
4. Nia with Poppy

Results from our Fun Day Show (photos of winners, courtesy of Rhian Stanley)

1. Puppy

1. Rachel Walker with Kefir
2. Bethan Jones with Nela
3. Julie Edwards with Lucy
4. Wendy Jones with Elsi
5. Charlotte Lane with Dotty



2. Pastoral and Working

1. Rhian Stanley with Loki
2. Jackie Lavington with Cooper
3. Paula George with Yanna
4. Megan with Ruby
5. Isabel Logan-Owen with Poppy



3. Hound and Gundog

1. Maria Wagstaff with Napoleon
2. Phillipa Roberts with Poppy



4. Terrier, Utility and Toy

1. Wendy Jones with Caio
2. Margaret Booth with Harry
3. Nicola Williams with Vinnie
4. Sioned Hughes with Elsi
5. Sharon Roberts with Django



5. Open

1. Jackie Lavington with Rio
2. Janet Heggarty with Ollie
3. Naomi Williams with Sam



4. Megan with Ruby

5. Charlotte Lane with Dotty

6. Veteran

1. Heather Gordon with Ria

2. Gillian Barratt with Duwch

3. Jackie Lavington with Teddy

4. Gillian Barratt with Candy

5.



Best in Show

Rhian Stanley with Loki

Best Veteran in Show

Heather Gordon with Ria

Best Puppy in Show

Rachel Walker with Kefir



7. Non-Pedigree Puppy

1. Matthew Rumbold with Rivia

2. Theresa Delacey Vallecarde with Brook

3. Sioned Hughes with Elsi

4. Matthew Rumbold with Willow



8. Non-Pedigree Adult

1. Matthew Rumbold with Bella

2. Jill Jackson with Mili

3. Llinos Roberts with Wilson

4. Laura Hector with Ossie

5. Caris Tecwyn with Lili



9. Non-Pedigree Veteran

1. Elesi Rowlands with Arnie
2. Theresa Delacey Vallecarde with Marnie
3. Doreen Ferguson with Kola
4. Ann Zanier with Joe
5. Laura Hector with Phoenix



10. Handsomest Dog

1. Laura Hector with Ossie
2. Llinos Roberts with Jack
3. Caris Tecwyn with Eric
4. Theresa Delacey Vallecarde with Red
5. Ann Zanier with Joe



11. Prettiest Bitch

1. Jill Jackson with Mili
2. Caris Tecwyn with Lili
3. Theresa Delacey Vallecarde with Brook
4. Stephanie with Bella
5. J (?) with Sky



12. Junior Handler

1. Isabel Logan-Owen with Poppy
2. Clifford Williams with Ted
3. Lisa Griffith with Cadi
4. Tasmyn Green with Jepster
5. Ann Zanier with Darcy



13. The dog the judge would most like to take home

1. Jill Jackson with Mili
2. Theresa Delacey Vallecarde with Strider
3. Lisa Griffith with Cadi



4. Nia Williams with Mili

5. Theresa Delacey Vallecarde with Darcy

Best Non-Pedigree in Show

Jill Jackson with Mili

Best Non-Pedigree Puppy

Matthew Rumbold with Rivia

Best Non-Pedigree Veteran

Elesi Rowlands with Arnie



AGM and SARDA Presentation

On Tuesday 3rd of May we had an informative presentation by Geraint Strello of the Search and Rescue Dogs Association (SARDA) at the Memorial Hall in Penygroes. He described the different ways of scenting and demonstrated, using his own dog, Will, the way a dog indicated to its handler that it had found something.

At the end of the presentation, a donation of £100 was made by the club to SARDA by club chairman, Jo McKenzie.



The presentation was followed by the club Annual General Meeting, at which the new committee was elected. As only twelve candidates had put their names forward for the twelve places, all were elected. Three members of last year's committee didn't stand for re-election. The number of committee members was then agreed to be reduced to ten at next year's AGM.

Your new committee comprises the following individuals:

Jo McKenzie, continuing in the role of Chairman. She also shares responsibility for Agility sessions.

Gail Jones, continuing in the role of Secretary. Gail also runs the club's Facebook page and helps run the club shop.

Pam Roe, continuing in the role of Treasurer

Ivy Bulled. Cleaning rota and supplies coordinator. Catering.

Tish Gaffey. Ringcraft co-ordinator.

Elly Hale. Trainer co-ordinator. She is also a long standing club trainer and shares responsibility for Agility sessions.

Brian Horrocks. Responsible for the newsletter and the blog, and maintaining the club membership database. He also shares responsibility for Agility sessions.

Dallas Moon. Responsible for promotion material.

Jean Rickford. Catering.

Megan Roberts. She is training to become a trainer, and shares responsibility for Agility sessions.

Carol Thomas. Responsible for promotion material. She also shares responsibility for Agility sessions.

Sandra Whiting. Walks co-ordinator and club shop.

We would like to thank Ann Bean, Joyce Adamson and Heather Roberts for their contributions as committee members in the past year.

Bryn Seiont Nursing Home

On Sunday 3rd of July, 7 members of the club and their dogs went to Bryn Seiont Nursing Home to put on an obedience class demonstration organised by Elly Hale for the residents. The following members took part:

Ann Bean with Fern, Gillian Charlesworth with Watson, Sue Dook with Bobby, Jayne Grove with Madog, Megan Roberts with Cai, Pam Roe with Izzy and Sandra Whiting with Lulu.

After the demonstration, the dogs went around the residents, which was much appreciated. Watson was taken for a 'walk' and was only reluctantly returned to Gillian to go home.

A big thank-you to Elly for her patience in organising the event and to all handlers and dogs for giving up their time to take part.

Megan Roberts

Spring Show

Our Spring Show, on Thursday 28th April at the Memorial Hall in Penygroes was well attended. The event was judged by Darryl Hughes.

Results:

1. AV Puppy (6-12 months)

- 1st Megan Roberts with Del
- 2nd John Jones with Simba
- 3rd Ceiran Thomas with Kiera



2. AV Sporting

- 1st Heather Roberts with Sam
- 2nd John Jones with Simba



3. AV Non-Sporting

- 1st Rhian Stanley with Sammi
- 2nd W.Williams with Jake
- 3rd Ellie Hale with Persephone



4. AV Open Dog

- 1st Rhian Stanley with Loki
- 2nd W.Williams with Jake



5. AV Open Bitch

- 1st Ian Turner with Bella
- 2nd Jackie Hughes with Anya
- 3rd Ellie Hale with Persephone



6. AV Veteran (over 7 years)

- 1st Ellie Hale with Persephone
- 2nd Ann Bean with Fern
- 3rd Sandra Whiting with Lulu
- 4th Pam Roe with Izzy



Best Pedigree in Show

- Rhian Stanley with Sammi
- (reserve – Ian Turner with Bella)



7. Non Pedigree Puppy

- 1st Pat Taylor with Tilly
- 2nd Christine Humphreys with Mona
- 3rd Keith Taylor with Wilf



8. Non Pedigree Adult

- 1st Sally Green with Jepster
- 2nd Gail Jones with Moli
- 3rd Lisa Griffiths with Cadi



9. Handsomest Dog

- 1st Keith Taylor with Wilf
- 2nd Megan Roberts with Cai
- 3rd Tasmyn Green with Jepster



10. Prettiest Bitch

- 1st Lisa Griffith with Cadi
- 2nd Dallas Moon with Tilly
- 3rd Sandra Whiting with Lulu
- 4th Ceiran Thomas with Keira



11. Waggiest Tail

Megan Roberts with Cai



12. Dog Judge would like to take home

Pat Taylor with Tilly



Best Novelty

Lisa Griffith with Cadi

(reserve Pat Taylor with Tilly)



Well done to everyone who took part. Our Autumn Show will be held on Thursday 20th October.

Good Citizens

Congratulations to the following who gained their Bronze award at the Kennel Club Good Citizen Dog Scheme Bronze Award tests which were held at the Memorial Hall in Penygroes on Wednesday 27th April:

Megan Roberts with Del

Olwen Evans with Zakk

Gillian Charlesworth with Lucas

Congratulations, also, to those who gained their Silver Awards in the tests held on Wednesday 25th May.

Gillian Charlesworth with Morgan and Lucas

Heather Roberts with Sam

Vale of Clwyd Canine Society Show

Club members enjoyed some success at the show on Saturday 2nd July, held at Ruthin Livestock Market.

Rhian Stanley: Her German Shepherd, Loki, shown by Ian Turner, came first in Graduate and went on to get Best of Breed. Loki now has four Best of Breeds from five shows, with three consecutive Best in Shows at Companion Shows.

Gillian Charlesworth: Enjoyed considerable success. Her Border Collies, Morgan and Travis, both gained firsts in Graduate and Open classes respectively. Travis, shown by Keith Charlesworth, then went on to claim Best of Breed, while Morgan gained Best Puppy in Breed.

Golden Retriever, Watson, came fourth in the Open.

Wendy Jones: Elsi came third in Welsh Terrier, Graduate, and was Best Puppy in Breed. She also came second in the Puppy Stakes.

Megan Roberts: Del came first in Post Graduate and was named Best Puppy in Breed in the Open Show. She came second in AV Puppy and Reserve Best Puppy in the Companion Show.

Pam Roe: Izzy came first in Veteran class in the Companion Show.

Insurance

One of our members recently discovered a change to her pet insurance policy regarding referrals for specialist treatment. It appears that her policy has been reworded to contain a list of 28 'preferred providers' for referrals by vets. Please check the small print when you renew your policy to see whether you are now restricted to which centres your vet can refer your dog. If your vet recommends a referral to a third party not included on the list of 'preferred providers', your insurance company will charge you extra. In this case our member would face a £200 surcharge, in addition to her policy excess.

There is opposition to this move by insurance underwriter RSA who underwrite policies from household names such as More Than, Marks & Spencer, John Lewis, Tesco, Argos and Homebase. The Royal College of Veterinary Surgeons has stated that a veterinary surgeon is the person best placed to assess where a pet should be treated, not an insurance company, while veterinary surgeons themselves have expressed their fears that the health and welfare of pets may be put at risk if insurance companies implement restrictions to limit the choice of referral practices used.

A Parliamentary Early Day motion was raised on the 25th April, and signed by 13 MPs calling on RSA to reconsider its decision:

That this House recognises that Royal Sun Alliance (RSA) is one of the largest pet insurance providers in the UK, selling its products via its More Than brand and underwriting pet insurance sold by Tesco; notes with concern RSA's recent decision to introduce a preferred referral network within these policies, limiting the options for secondary care in case of serious pet illness and injuries to just 28 veterinary practices in the UK; further notes that this is the first time a pet insurance company has sought to prevent first opinion vets from recommending referral treatment based solely on their assessment of the most appropriate care option for an individual pet; notes that the new preferred

referral network excludes many of the top veterinary specialists in the country; regrets that pet owners will now have to travel further to access secondary care; further regrets that pet owners who want to use referral practices not on the RSA approved list now face a £200 charge at the point of treatment; and calls on RSA, More Than and Tesco to reconsider this policy change for the benefit of their customers and covered pets.

Unfortunately, although Early Day Motions are formal motions for debate in the House of Commons, most are not actually debated, and in this case, it was not. They are used more as a means of publicising the views of individual MPs or to draw attention to particular subjects. As a result RSA are unlikely to abandon their preferred providers scheme.

It's worth checking your insurance.

Email From an Old Friend

Back in February, club member Rhian Stanley received an email from an old member of the club, Helen Woodfield, who some of you may remember. We have permission of Helen and Rhian to include the text here:

Hi Rhian

Just wanted to let you know how your help, advice, training and encouragement lives on in Portugal. The basics you taught me have never been forgotten. You have always been an inspiration to me and I avidly follow what the Blanik gang get up to. I shall never forget how patient, kind and understanding you were when Leika died from a torsion when we moved from Carmel and stayed in your caravan.

Last year was a difficult one for you and Steve but thankfully you have come through it and are hopefully well recovered.

Last year my fabulous little GSD was ill in June, which I think I told you about when poor Finlay began being disorientated, as I wondered if he had the same problem as Tika, who had strangely been diagnosed with toxoplasma. Anyway she recovered about 80% of her previous health and we started our obedience training again but modifying how we worked as she still had a slight head tilt. On Dec 2nd we went back to the specialist vet in Lisbon for another MRI scan and Spinal Fluid exam as she had had another episode of disorientation with eyes rolling every which way. She was diagnosed with Meningitis! I was told she was very ill but that if she had a good response to the steroid treatment etc then she should be ok. She spent the next 10 days in and out of the local vets. She was losing weight and life was very difficult until finally on 12th Dec she was put to sleep, nothing could be done to save her. The autopsy showed she had necrosis of the liver, spleen and kidneys. I was told it was a fungal meningitis and had been difficult to diagnose. I was devastated.

BUT the big thing to come out of all this is that I was talking to the guy I train with and mentioned the KC Good Citizen Award which I had followed with you with Gypsy, got him interested in the idea of it and he asked me to help him set up a similar award for people who train with him to work towards. Tika had been an inspiration to a lot of people. At training people had said I want my dog to do what Tika does!! She was brilliant at obedience and so fast in agility. Even the vets admitted the benefit of good training after Tika had spent time with them. She had almost become a sport dog but was also a very much loved pet.

Last Saturday the Bronze Level of the Good Citizen Dog Award took place for eight dogs. There was a lot of interest shown by the local authority, veterinary practice and dog rescue centre and also the event was covered by local television. The proud moment for me in all of this is that Tika in profile has been used as the symbol for the Good Citizen Dog Award and appears on the certificates, medals and any information about it. The three levels of the award will be worked towards and certification take place twice a year.

I had decided after Tika died that I was not going to have another dog. Chester plods on but at 12 and a half I guess his days are numbered. Then a 10 month old GSD popped up on FBook wanting a home as her owner had died and she was in the municipal kennel. My heart went out to her and it seemed fate I should have her as she was already called Leika - same as my first GSD. So I have a dog who has been on a chain most of her life, hasn't been taught any manners and who didn't have any idea what a ball or toy was and we are going to make each other very happy.

So a big thank you to Nantlle Vale Dog Training Club and Rhian who trained Gypsy and me! Tika has made her mark on the dog training world here in Portugal and I have been asked to become a trainer/handler.

Helen x

Doggy Health Issues

Alabama Rot

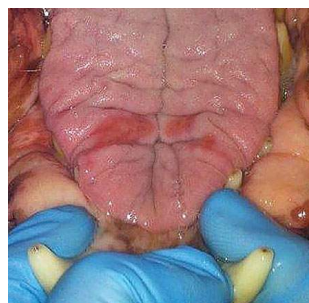
You may have heard of this disease through reports in the media. There have now been three confirmed cases in Wales this year: 2 in Monmouthshire, and 1 in Flintshire.

Alabama Rot otherwise known as Cutaneous and Renal Glomerular Vasculopathy (CRGV) has only recently been recognised in the UK.

The first signs of this disease are unexplained redness, sores or swelling of the skin (particularly on the paws or legs, but it can also occur on the body, face, tongue or mouth). Remember most skin problems are not Alabama Rot. The lesions, ulcers or sores which develop can look like bites, sores, wounds or stings. If you can't explain these symptoms, it is best to take the dog to a vet without delay. Within days of the lesions appearing, some dogs go on to develop life-threatening kidney failure (symptoms of acute kidney failure will include vomiting, reduced hunger and unusual tiredness). The vet should be able to confirm Alabama Rot. Remember most cases will not be Alabama Rot, however, if it is, the quicker treatment can be started, the greater the chance of your dog surviving.

Unfortunately, as the cause is unknown, it is difficult to give specific advice about prevention. There is currently no vaccination against this disease.

Examples of Alabama Rot lesions:



For further information go to the following sites:

<http://www.andersonmoores.com/uploads/files/AKI%20CRGV%20NEWSLETTER%20May%202015.pdf>

<http://alabamarot.co.uk>

Kennel Cough

We recently received the following notice from PODS (based near Bryngwran on Anglesey):

Kennel Cough Advisory Notice

It has come to our attention that Kennel Cough is present in the North Wales area.

We would like to continue with training and our upcoming Agility Show, but also need to ensure the safety and wellbeing of all the dogs that attend Tai Lawr and indeed our own dogs. For those of you who have not been here before, we are a busy training group and have many visitors staying with their dogs at our campsite as well as visiting groups from Flyball Teams across the North West area and beyond.

As you can imagine, if Kennel Cough was brought to the premises without our knowledge, it places a large number of dogs at risk from illness. Further, should it then be found present, with 12 dogs on the premises, it has the potential to be about for some considerable period of time. We would have to close the premises down including our campsite which in turn impacts on our training programme and a very important source of income through our camping field.

Kennel Cough has an incubation period of 7-10 days and so your dog may not show symptoms for some days after contact with an infected dog. Further it can be transferred by owners and handlers. Importantly one of the dogs recently diagnosed with Kennel Cough had received the Kennel Cough Vaccine, so please do not assume your dog cannot contract the virus. If your dog shows no sign of Kennel Cough after 21 days following contact or suspected contact, your dog should not be contagious.

To ensure we can continue with training and this weekends Agility Show - we would ask that if any of you have any suspicion that your dog may have had contact with Kennel Cough in the past two weeks - DO NOT come to Tai Lawr. If you have entered the show, we will happily refund your entry fee. Please consider the declaration you signed on your entry form.

Finally if you suspect your dog has Kennel Cough, contact your vet for advice and just as importantly tell those who you train with or go walking with and stop the virus spreading.

Kennel cough is caused by a combination of highly infectious viruses and bacteria that can spread rapidly in the air or by direct contact among a group of dogs, given the right conditions. It starts by the dog becoming 'off-colour' for a few days, before a hacking cough that starts whenever the dog gets excited or exercises.

The cough usually results in the production of white froth, or mucus, which some owners describe as retching. Generally healthy dogs are not too ill; they may have a mild temperature 103°F (normally 101-101.5°F) and may be a little off their food. The cough will get worse over the first few days then, if untreated, gradually resolve after three to four weeks. In very young or old dogs, or if there is concurrent disease, kennel cough may become more severe and lead to bronchopneumonia. This is very nasty and uncomfortable for the dog and in some cases may result in death.

The virus damages the cells lining the windpipe causing inflammation allowing the bacterial part of kennel cough to move in. Unfortunately the more the dog coughs, the more damage will occur to the airway. In severe coughing cases the animal's defences are so poor there is a chance bacteria will reach the lungs and a pneumonia will begin.

The disease usually takes about five days from contact with the viruses and bacteria to the start of the cough. Once the cough has become evident it is important not to do anything to exacerbate it. Therefore avoid excitement, cause for barking and exercise.

Every time the dog coughs it is spreading the disease, so don't mix it with dogs who are not your own. Unfortunately, by the time the cough is evident, all of your dogs are likely to have been exposed. This usually means that all the dogs will become infected, however in some cases, like people with colds, the odd dog will be lucky and miss out.

Take a dog suspected of having kennel cough to the vet, but leave it in the car while you ascertain how they want to handle the situation.

Remember do not take your dog to places where it is likely to be in close contact with other dogs, for instance at club sessions, until it has completely stopped coughing. It can be contagious for anywhere between five days and a month (even with treatment).

Canine Parvovirus (CPV)

We have recently been made aware of a confirmed case of Canine Parvovirus within the area. It is a highly contagious, extremely hardy virus that can survive in the environment for long periods of time - months or even years.

When it first emerged in the 1970s, thousands of dogs died before an effective vaccine was developed. Thanks to vaccination it no longer occurs in epidemic proportions, though it is still relatively common in unvaccinated dogs, particularly those in high-risk areas, and young puppies.

The main source of infection is the faeces of infected dogs, but the virus can also be spread on shoes and clothing, and on the coat and pads of dogs. Infection occurs through the mouth or nose. The virus can be passed out in the faeces of a dog within 3-4 days after infection and before any clinical signs are seen.

The incubation period is usually 4-7 days, after which severe enteritis will develop. Signs include depression, severe vomiting, refusal of food and water, abdominal pain, and profuse smelly, bloody diarrhoea, which can result in rapid and severe dehydration, and ultimately, death. Some dogs are lucky and only display mild symptoms.

We're not psychic!

If you have some relevant news or items of interest you would like to share with the rest of the club, let us know and we'll do our best to include them in the next newsletter, on the blog or on Facebook. Or on all three.

Contact Jo McKenzie or Gail Jones at nantllevale.dogtrainingclub@gmail.com

The blog can be accessed at

nantllevaldogtrainingclub.wordpress.com

The electronic version of this newsletter can also be found there.

Search for Nantlle Vale Dog Training Club on Facebook.

Bad Weather

In the event of bad weather causing the cancellation of classes, an email will be sent out to all members, and a message will be posted on facebook and on the blog.

If you are not reading this newsletter via the emailed version (ie you're reading the printed version or the one on the blog), please check with us that we have your correct email address.

Any opinions expressed by members in items contributed to the newsletter are not necessarily the opinions of the Committee or the Club